

**OTR**



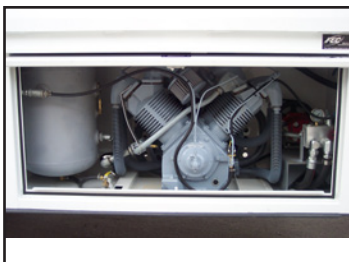
**FLEET EQUIPMENT CORPORATION**  
**THE MOST TRUSTED NAME IN TIRE TRUCKS.**  
Franklin Lakes, NJ ■ 800.631.0873 ■ [www.fectrucks.com](http://www.fectrucks.com)







The OTR service vehicle can be configured in different lengths for a single or tandem chassis. Available as a flat bed or as a haul body with 41" tall sides. With a 3216 Crane with optional TP130P Tire Positioner, this full sized unit can handle most OTR work. Your customers demand the best, so should you.



H150 air compressor with PTO/hydraulic drive. 127 CFM with a 23 or 38 gal. tank.



Hose reels commonly placed in slew box on left side. 1/2" X 50' and 3/8" X 50' heavy duty reels with hose end guard,



Tire Life tank, O-Ring rack, and Heavy-Duty 12V oil cooler for crane and air compressor hydraulics available.



Optional rear step and grab handle for easy access to the bed.

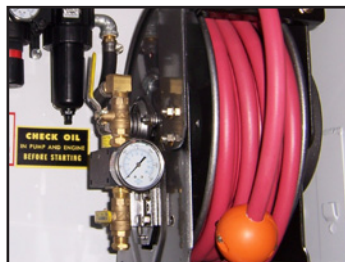
| 3216 Crane              |                    |
|-------------------------|--------------------|
| 160,000 ft. lbs. rating |                    |
| Crane Capacity Rating   | 16,000 lbs. at 10' |
| Maximum Reach           | 16'-6"             |
| Crane Weight            | 5840 lbs.          |
| Chassis RBM Required    | 2,100,000 in.lbs.  |



Cross-body block basket with a fold-down side and tool boxes available depending on chassis length and configuration. Sahara air dryer also shown.

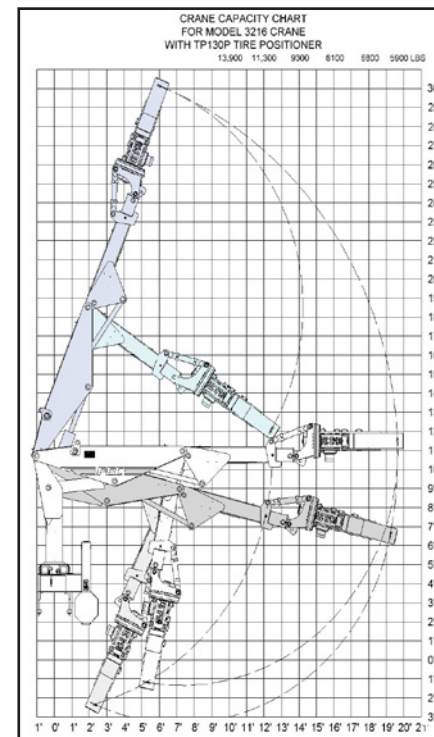


Tool drawers available for carrying small parts and tools.



Optional airing station for easy tire inflation.

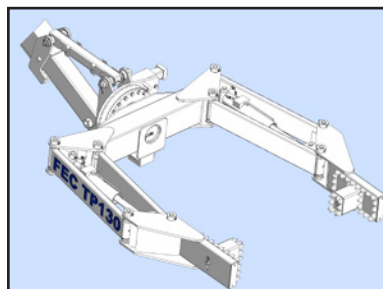
- CRANE FEATURES**
- Manual crane controls on both left and right sides of the vehicle.
  - Rack and pinion rotation system offers rugged durability and simplicity.
  - Load holding valves on all lift cylinders, chrome plated cylinder rods and tube walls.
  - Center mounted crane offers better weight distribution to chassis suspension.
  - Crane nose will accept FEC push bar.
  - Self lubricating bearing surface on all slide tubes.
  - Heavy duty PTO and hydraulic pump.



Optional radio remote control with unique manual lever backup in case remote system is lost or damaged.



Optional backup camera for safety while reversing.



**TP130P**  
Tire Positioner  
Maximum Open 124-1/2"  
Minimum Closed 29"

**FLEET EQUIPMENT CORPORATION**  
**THE MOST TRUSTED NAME IN TIRE TRUCKS.**  
Franklin Lakes, NJ ■ 800.631.0873 ■ [www.fectrucks.com](http://www.fectrucks.com)

